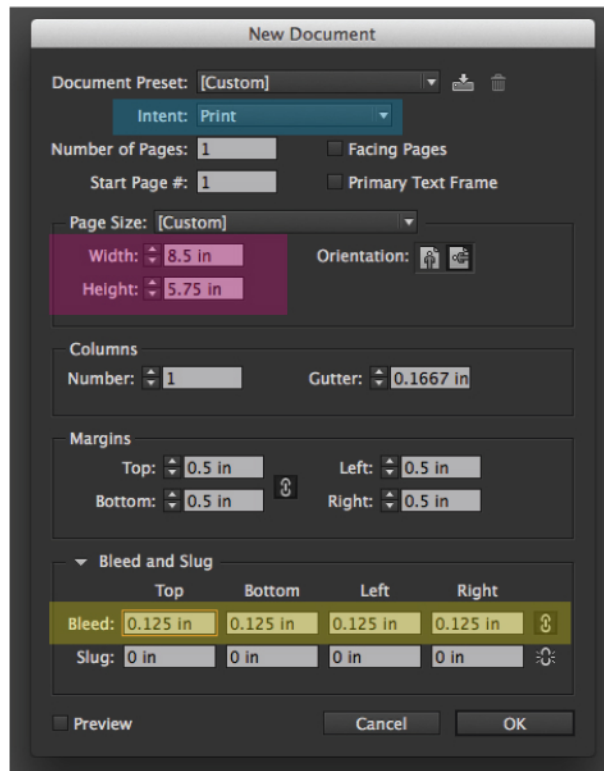


ART SPECS: ADOBE INDESIGN

1. FILE SETUP:

- Files must have 0.125" of Bleed area on each side.
- This will add a total extra 0.25" to the file length and width.
- Ex. A 8.5" wide by 5.75" high file, will be 8.75" wide by 6" high with the Bleed included.
- In the Intent area choose "Print" (highlighted in Blue). This will start your document in CMYK color mode.



- In the "New Document" box input your Width and Length (highlighted in Pink)
- In the "Bleed" area (highlighted in Yellow) input 0.125".
- This will add 0.25" of Bleed to your file.

2. ARTBOARD:

- In the image below inside the Black Line is 8.5" x 5.75". This is the Live Art Area.
- The Red Line represents the edge of the Bleed. This 0.125" of extra space around the Live Art Area gives us room to trim your tickets cleanly.
- Color and graphics should extend to the Bleed Red Line.



BLEED AREA
(8.75" x 6")

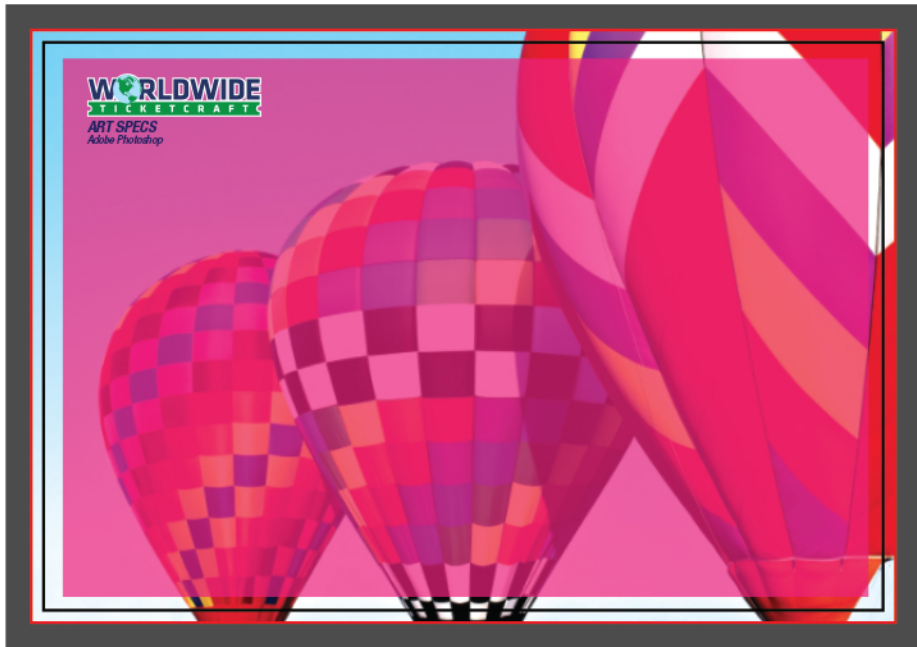
LIVE ART AREA
(8.5" x 5.75")

ART SPECS: ADOBE INDESIGN

3. SAFETY AREA:

- All of an artwork's text or important info, including logos and photos must be 0.125" inside of the Live Art Area.
- This insures that no art will be cut off during any trimming.

See the below image showing the Saftey Area highlighted in Pink.



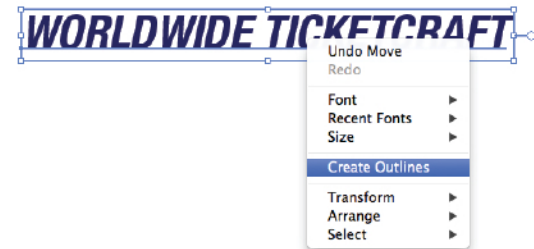
4. FONTS:

- We may not have the same fonts that an artist uses on a project. Send us all fonts used in either .TTF or .OTF file formats. Also the "Create Outlines" option can be used.
- Right Click on your text and select "Create Outlines". This will turn text into an uneditable vector object. Text can not be modified after this step.

A. SELECT TEXT:



B. RIGHT CLICK, SCROLL & SELECT "CREATE OUTLINES":



C. TEXT IS NOW A VECTOR OBJECT:



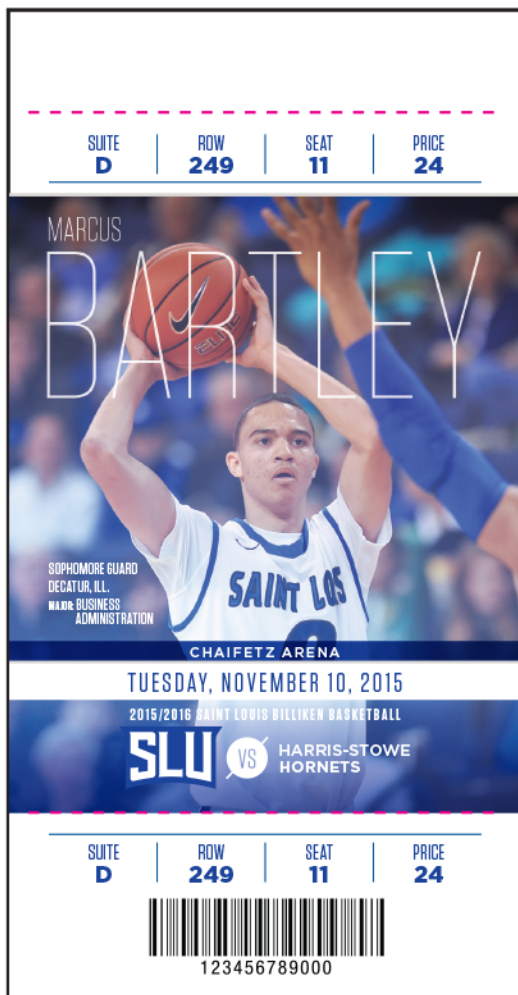
ART SPECS: ADOBE INDESIGN

5. VARIABLE INFORMATION:

- When creating art files that contain Variable Information we only need 1 image showing us Fonts and their positions. The rest of the files should be clear of all Variable Information and Perforation marks.

Below is only an EXAMPLE. Variable Information differs on every project.

**A. 1ST TICKET SHOWING
VARIABLE SUITE, ROW,
SEAT, PRICE, DATE OPPONENT,
BARCODE & PERF MARKS**



**B. ALL OTHER TICKETS
SHOULD BE CLEAR OF
VARIABLE INFO & PERF.
WE WILL FOLLOW YOUR
GUIDELINES SET UP
ON TICKET #1.**

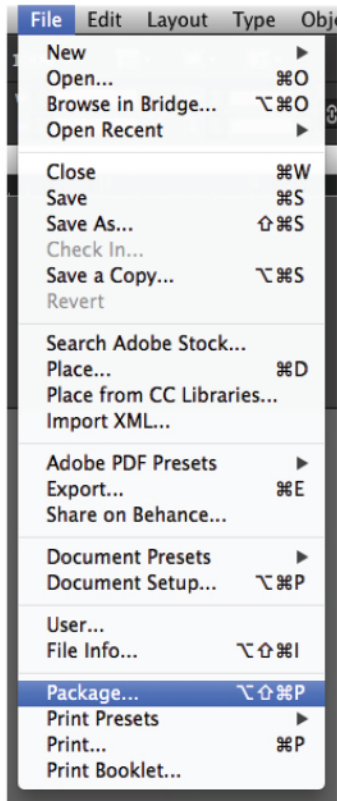


ALWAYS SUPPLY FONTS FOR VARIABLE INFORMATION.

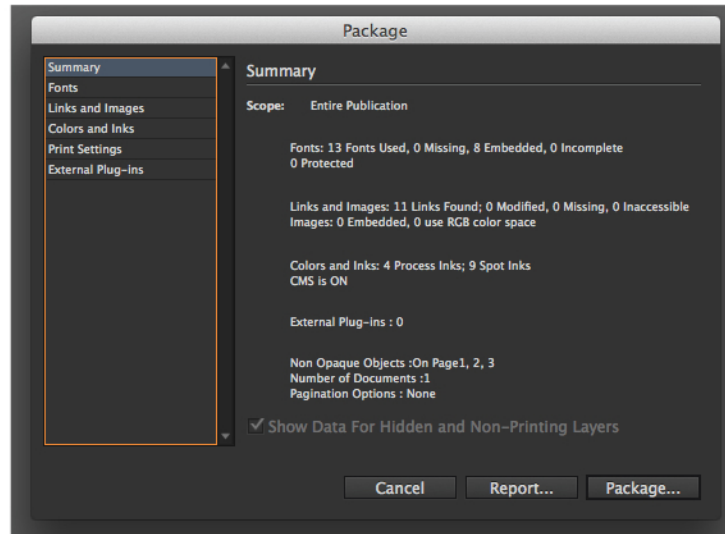
ART SPECS: ADOBE INDESIGN

6. PACKAGING FILES:

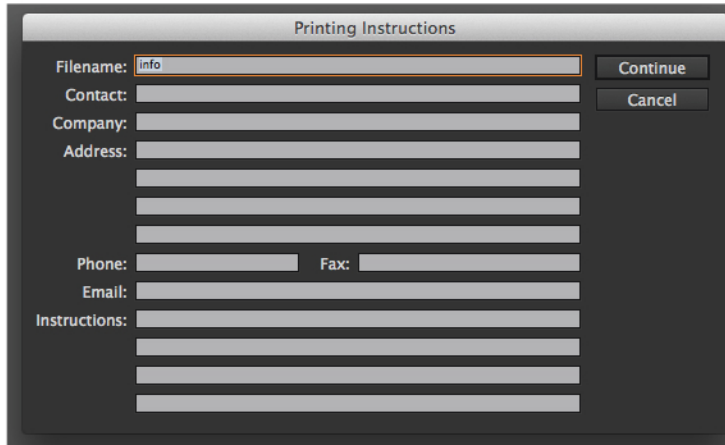
A. In the File Menu, scroll down & select “Package”.



B. Click the “Package” button to continue.



C. If you choose to add any “Info” to your document input it in the fields below.



C. The “Package” folder will contain the InDesign file (.indd), the Info text file, the Document Fonts folder & Links folder.

